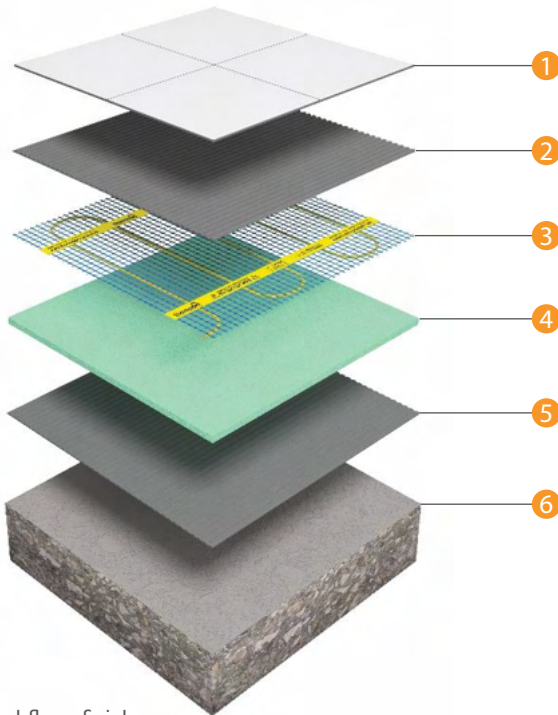


Thermonet 150W/m² TB Kits

For installation Under Tile & Stone Floors

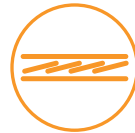


- ① Tiled floor finish
- ② Flexible tile adhesive
- ③ Thermonet 150W/m² heating mat
- ④ Econoboard uncoated insulation board
- ⑤ Flexible tile adhesive
- ⑥ Concrete substrate



Lifetime Warranty

We are so confident in the quality of Thermoscreed Underfloor Heating that we give each cable a warranty that lasts a Lifetime with 3 year warranty on the Thermostat.



TwistedTwin cable construction

The unique stress free cable construction creates a longer lasting heating cable with zero electromagnetic field (Zero EMF)



Full self adhesive mesh

The self adhesive mesh speeds up installation by holding Thermonet matting to the substrate for easy self levelling and tile fixing.



Heating cable protection

Thermonet is installed wire-side-down which means the heating cable is protected from damage during installation by the hard wearing mesh layer.



Primary or secondary heating

Utilising innovative extrusion processes provides real 'lay flat' technology that makes installing Thermonet easy. The matting system is only 3.5mm thick with a low profile cold tail of only 4mm thick which is typically concealed within the tile adhesive layer.

Technical Data



Kit includes: Thermonet 150W/m² Mat, Programmable Thermostat (5226A), Floor Temperature Sensor, Sensor Conduit, Fixing Tape, Cable Monitor, Installation Guide & Warranty Form

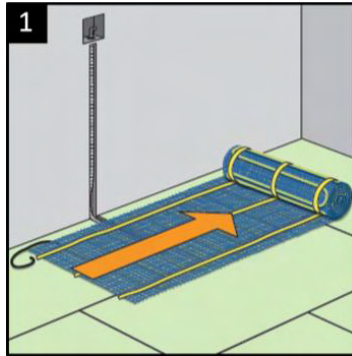
Width	500mm
Heated Width	430mm
Thickness	3.5mm
Max. Temperature	28°C*
Protection Rating	IP68
Warranty	Lifetime on heating mat
Wattage	150W/m ²
Conductor Type	Single Ended
Cold Tail Length	5m

* Regulated by floor sensing thermostat



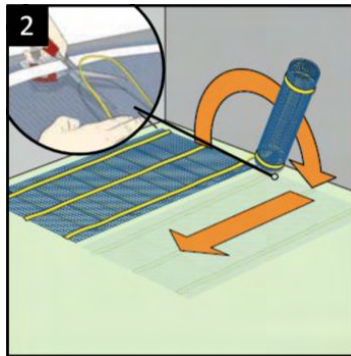
Installation Overview

Thermonet electric underfloor heating mat is quick and easy to install. This overview gives a guide to the basics. Always read the instructions in full before attempting your own installation.



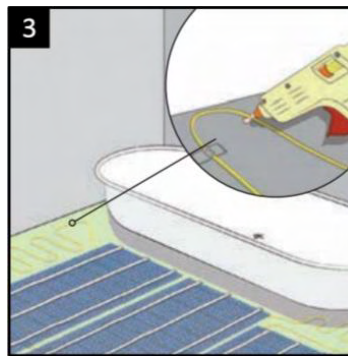
1 Roll out the mesh

The mesh should be laid wire side down



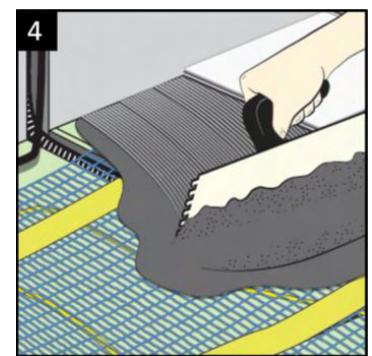
2 Cut the mesh (not the cable)

Turn the mesh 180° and continue rolling



3 Loose run for irregular areas

Remove the cable from the mesh, arrange and stick down



4 Laying the tiles

Use a flexible tile adhesive to fix tiles straight over the heating

Thermonet electric underfloor heating mat is quick and easy to install. This overview gives a guide to the basics. Always read the instructions in full before attempting your own installation.

Thermonet Mesh 150W/m² TB Kits

Stock Code	Size (m)	Area (m ²)	Output (W)	Resistance (Ω)
111502TB	2 x 0.5	1.0	150	353
111503TB	3 x 0.5	1.5	225	235
111504TB	4 x 0.5	2.0	300	176
111505TB	5 x 0.5	2.5	375	141
111506TB	6 x 0.5	3.0	450	118
111507TB	7 x 0.5	3.5	525	101
111508TB	8 x 0.5	4.0	600	88
111509TB	9 x 0.5	4.5	675	78
111510TB	10 x 0.5	5.0	750	71
111512TB	12 x 0.5	6.0	900	59
111514TB	14 x 0.5	7.0	1050	50
111516TB	16 x 0.5	8.0	1200	44
111518TB	18 x 0.5	9.0	1350	39
111520TB	20 x 0.5	10.0	1500	35
111524TB	24 x 0.5	12.0	1800	29
111528TB	28 x 0.5	14.0	2100	25
111532TB	32 x 0.5	16.0	2400	22